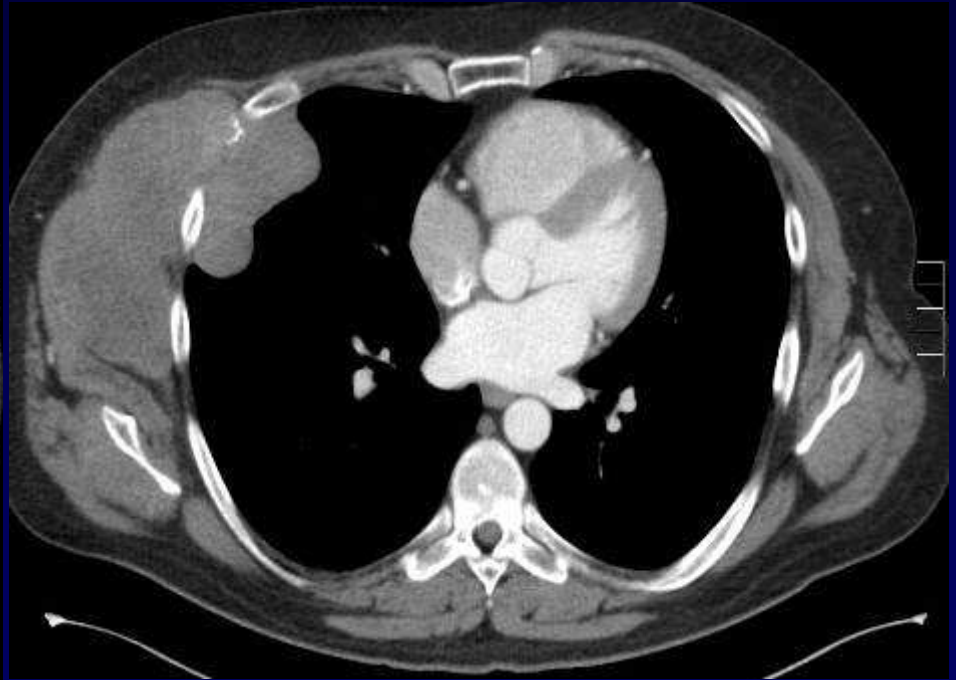
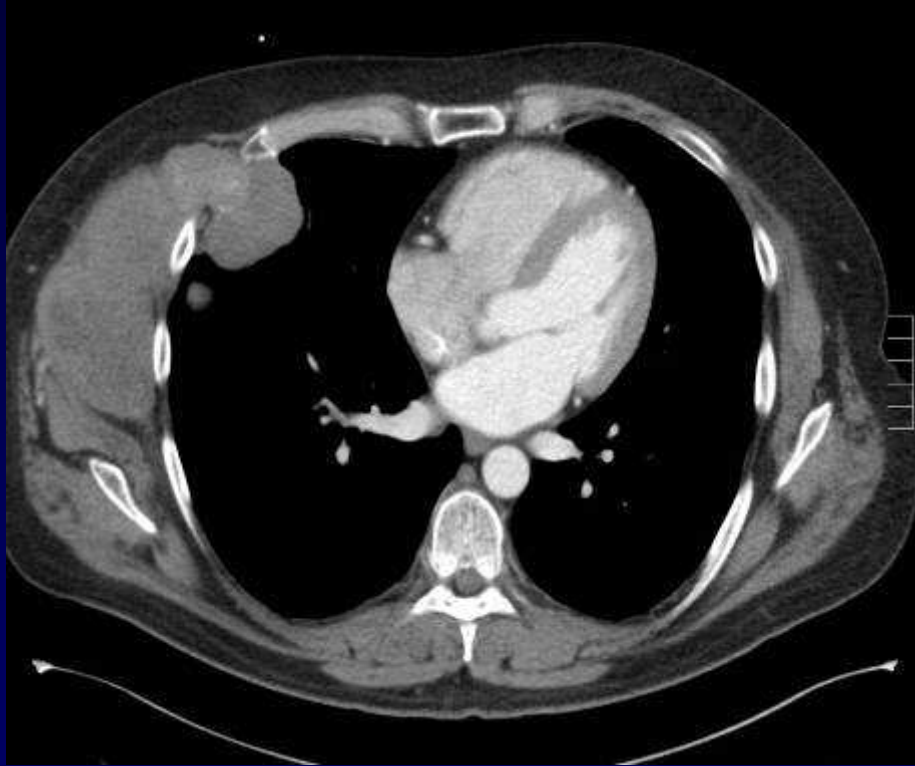


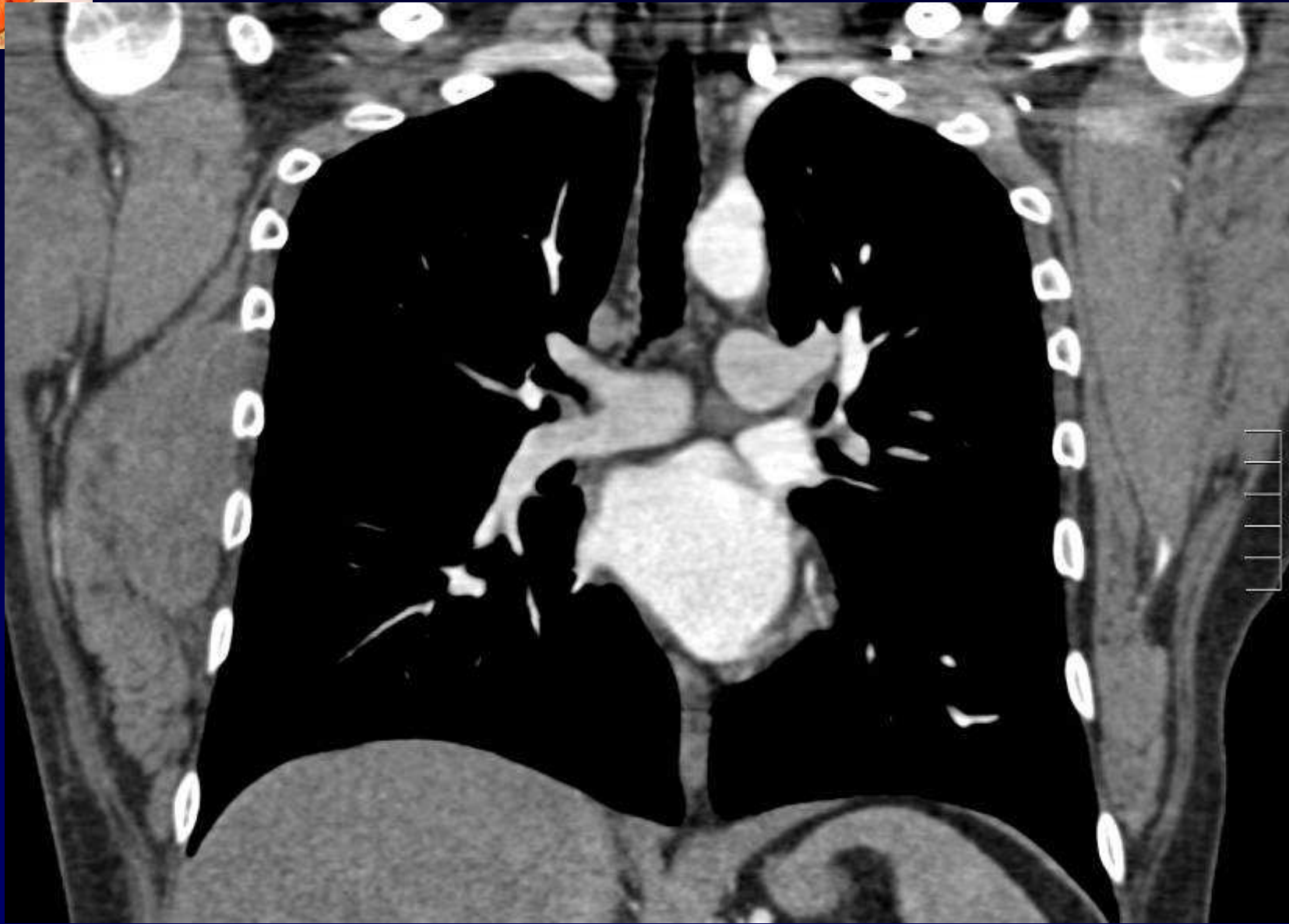
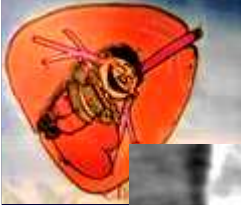


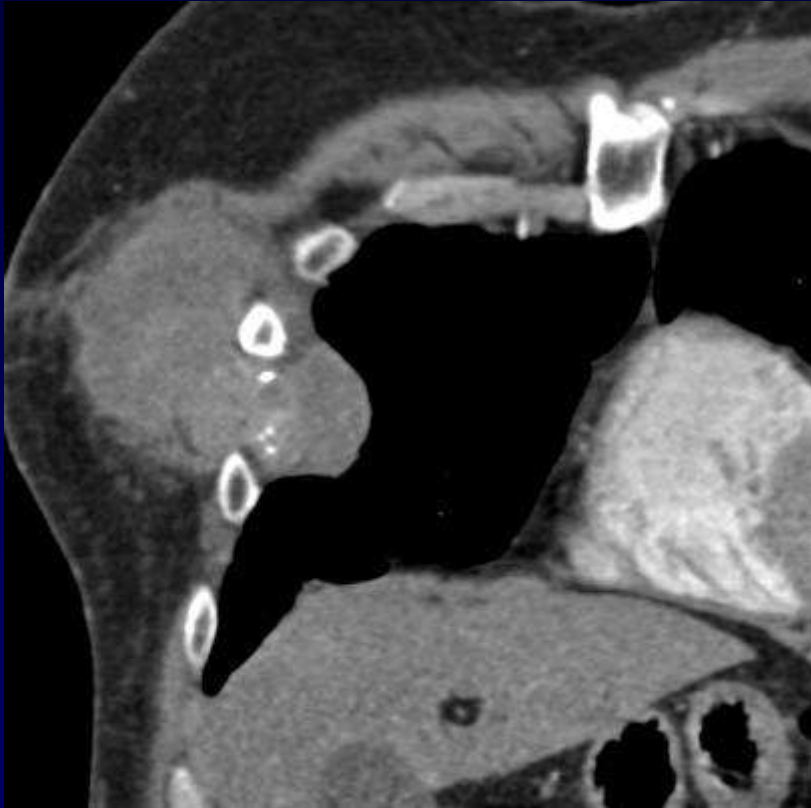
## **Dossier 4**

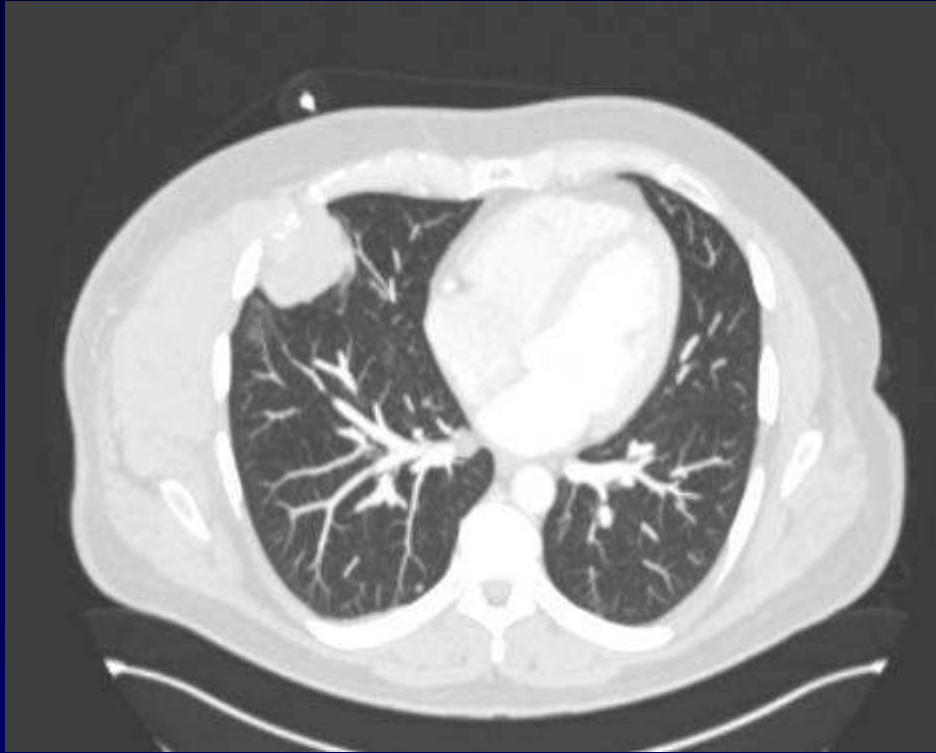
**B GHAYE**

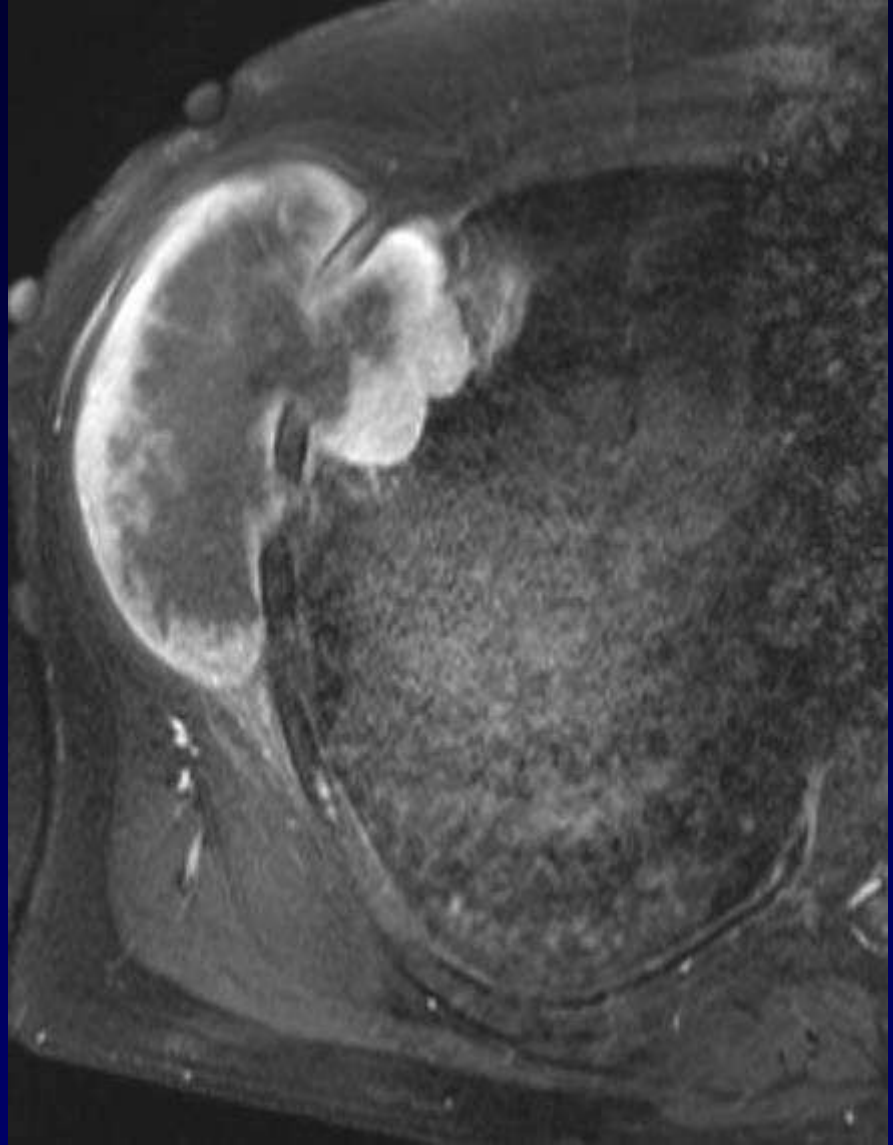
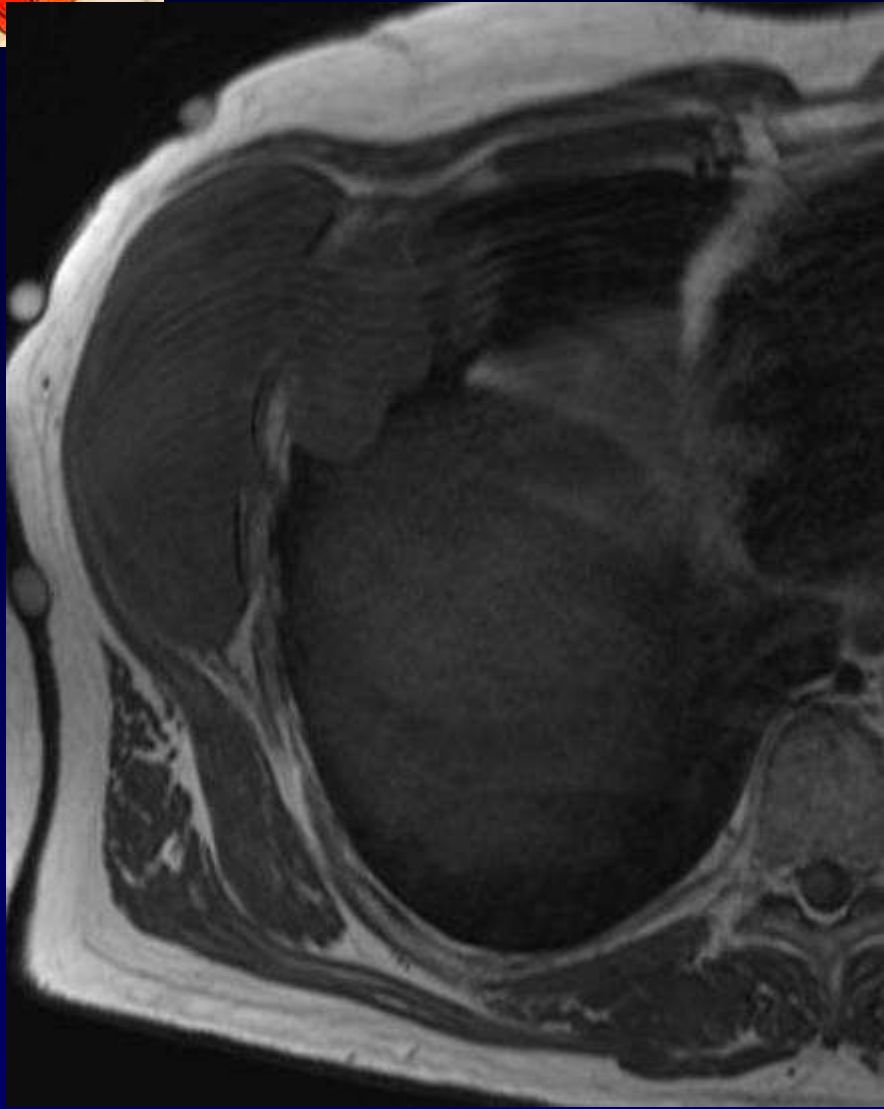
- **Homme de 24 ans**
- **Masse douloureuse pariétale droite**













**Diagnostic ?**



**Diagnostic : Ostéosarcome**

**Codage : Paroi – Tumoral malin**



## Discussion – Points importants

- Groupe hétérogène
- Production d'une matrice ostéoïde immature
- Localisations rares : côtes, scapula, clavicule
- Présentations variables
- Masse douloureuse des parties molles
- Infiltrante – Mauvais pronostic
- CT: - Minéralisation plus importante au centre de la lésion.
  - Rupture corticale
  - Réaction périostée agressive
- MR: Hétérogène (Ca++, hémorragie, kystes, nécrose)